



SLUDGE HUNTER

Process Instrumentation

Sludge Hunter measures the sludge/water interface in clarifiers and thickeners.

The **ECHO Sludge Hunter** reliably measures sludge and sediment levels in clarifiers, thickeners and tanks. The ultrasonic **Air Purge Xducer** is connected to the **Mounting Flex Kit** and immersed just below the surface of the water and pointed to the bottom of the tank. The Sludge Hunter uses time of flight echo processing and advanced algorithms to lock on the true sludge interface level and ignore the floating solid particles and troublesome rag layers. The unique patent-pending "Solids Algorithm" has been designed to automatically filter all floating solid particulates and electrical noise interference for unmatched performance.

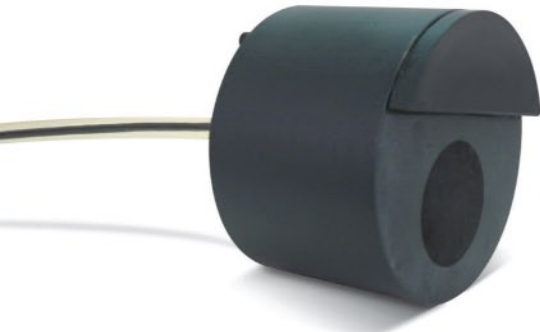


A simple 3-button keypad is used by the operator to input the tank depth. The Sludge Hunter automatically does the rest with its advanced echo processing and signal gain adjustment. The LCD screen displays the echo profile for visual confirmation of the sludge level relative to the tank bottom. A 4-20mA signal is provided proportional to the sludge level for SCADA input.

The Air Purge Xducer automatically cleans the face of the sensor every 15 minutes for maintenance-free operation (No Moving Parts). This purging keeps the signal strength high by removing build-up and debris. Alternative wiper blade cleaning methods inevitably produce mechanical problems and seal leaks, but not with the ECHO Air Purge Xducer!

Successfully Operated In:

- **Primary & Secondary Clarifiers**
- **Stationary & Rectangular Bridges**
- **Gravity & DAF Thickeners**
- **Septic Tanks**
- **Liquid/Solid Interface**



AIR PURGE XDUCER

- **Superior Echo Processing**
- **Eliminate Manual Readings**
- **Self-Cleaning Transducer**
- **Automate Clarifier Control**
- **ECHO Profile on LCD Display**



